

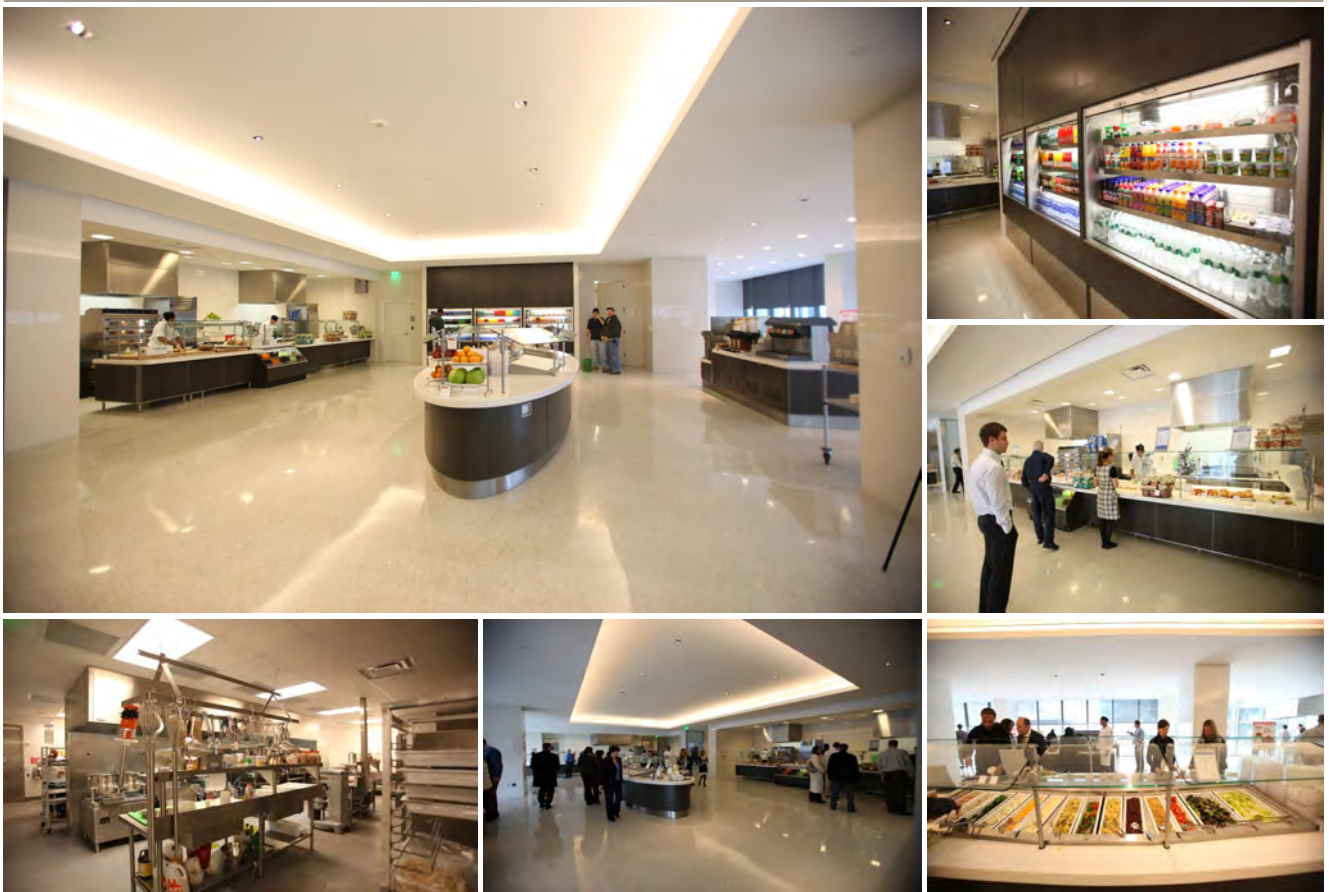
LEGG MASON

Global Asset Management

Inner Harbor
Baltimore, Maryland 21201

Architect:	Gensler	Baltimore, MD
Engineer:	Rybka Smith & Ginsler Limited	Toronto, ON
Consultant:	Raymond/Raymond Associates	Goshen, NY

Project Type:	New Employee Servery & Production Kitchen		
Building Population:	1,720		
Square Footages:	Servery SF-	4,600	
	Kitchen/Catering SF-	5,500	
	<u>Dining Area SF-</u>	<u>12,900</u>	
	Total Food Service SF-	23,000	
Food Service Cost:	\$1,700,000.00 (approx.)		
Completion Date:	August 2009		



RAYMOND/RAYMOND ASSOCIATES
FOOD SERVICE CONSULTANTS SINCE 1936

51 Greenwich Avenue
tel: 845 360 5112

Goshen, NY 10924
email: info@rradesigns.com

website: www.rradesigns.com

75+
years