

A. HOLLY PATTERSON

Extended Care Facility- Nassau County LTC

875 Jerusalem Avenue
Uniondale, New York 11553

Architect: Nadaskay Kopelson Architects

Morristown, NJ

Engineer: Kallen & Lemelson, LLP

New York, NY

Consultant: Raymond/Raymond Associates

Goshen, NY

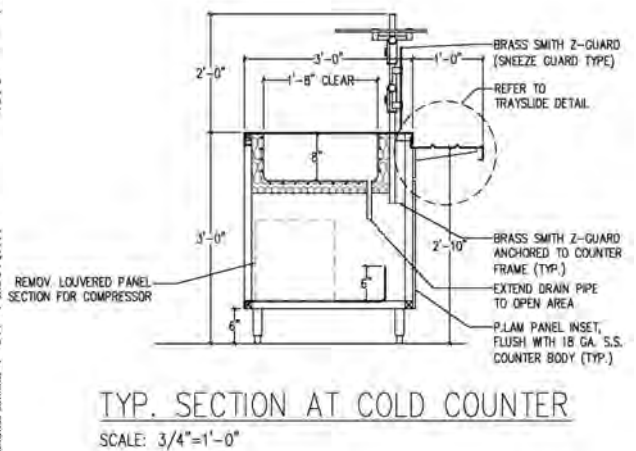
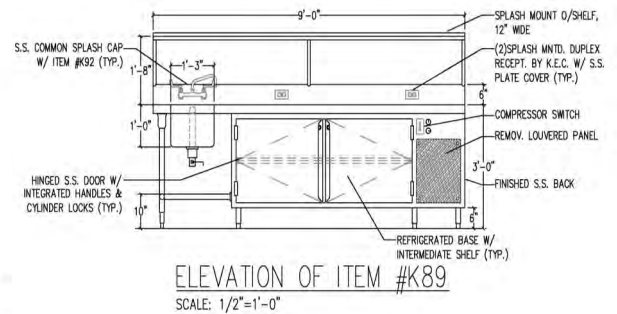
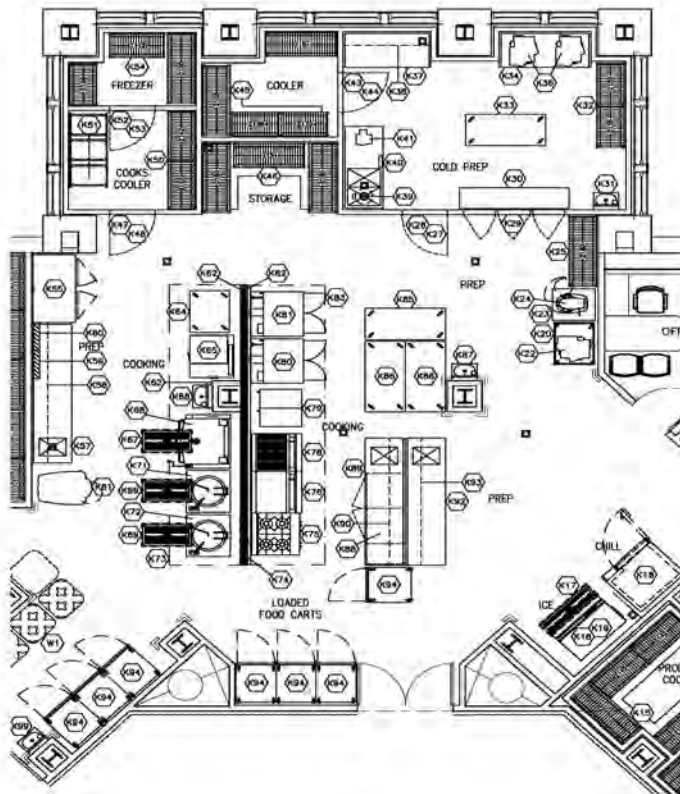
Project Type: New Production Kitchen, Decentralized Pantries,
Employee Cafeteria & Coffee Shop

Building Population: 360 Bed Facility

Square Footages:	Kitchen SF-	4,250
	(6) Pantries SF-	1,990
	Employee Cafet. SF-	530
	Coffee Shop SF-	380
	<u>Total Food Service SF-</u>	<u>7,150</u>

Food Service Cost: \$1,140,000.00 (approx.)

Completion Date: Not Funded



RAYMOND/RAYMOND ASSOCIATES
FOOD SERVICE CONSULTANTS SINCE 1936

51 Greenwich Avenue
tel: 845 360 5112

Goshen, NY 10924
email: info@rradesigns.com

website: www.rradesigns.com

75+
years